



If it's hardcore, it's DuraCore!

Leading Concrete Protection Systems

www.duracore.com.au

## CURE & SEAL

### Complete Car Park Protection

Available in 15 litre containers

#### Product Description:

DuraCore's Cure & Seal is a proprietary water based polymer formulation applied to new and existing concrete giving an excellent cure regime, dust proofer, surface hardener and stain resistance from oils. Cure & Seal is compatible with line marking.

#### Application:

**Note:** In hot windy climates, mist-wet the surface with water and remove any puddles prior to application.

**As a Cure:** Apply as soon as possible after concrete's initial set for optimum cure benefit.

**Existing Concrete:** Apply to a clean absorbent surface

#### Installation:

1. Use a pump pack garden type sprayer or powered non atomizing sprayer and evenly apply.
2. Ensure you do not mark the surface of new concrete with either your feet or pressure from the spray.
3. Begin applying at the lowest level elevation. For example, walls, ramps and slopes should be applied side to side, from the bottom up.

**Rate:** Burnished or steel trowelled surface apply at a rate of 6.5m<sup>2</sup> - 8m<sup>2</sup> per litre.

Broom finished or open surfaced finishes apply at a rate of 3.5m<sup>2</sup> - 6.5m<sup>2</sup> per litre.

#### Precautions:

Like wet concrete and some high alkali cleaning products, DuraCore's Cure & Seal will etch glass and discolour brushed aluminium if not removed before it dries. Mask or clean off with a wet cloth as you go.

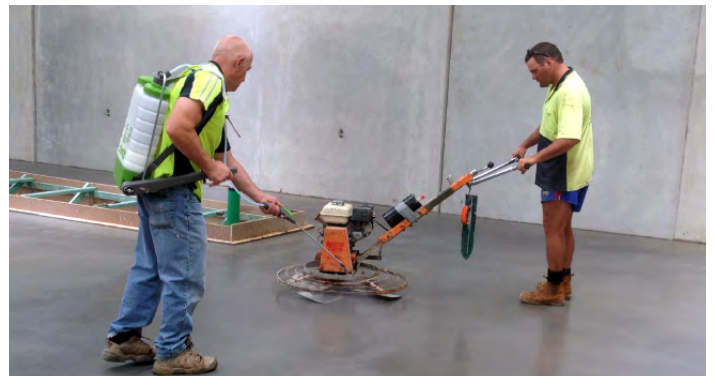
Do not allow Cure & Seal to dry in puddles on the concrete surface. An hour after application, remove any excess before it dries on the surface with a soft broom, water or blower. Always test suitability and compatibility with your next process.

Refer to 12 page MSDS at [www.duracore.com.au](http://www.duracore.com.au)

- Reduce Dusting
- Lasting Stain Protection
- Low Cost
- Environmentally Friendly
- Reduced Tyre Squeal
- Enhanced Slip Resistance

#### Advantages:

- ✓ Resists oil staining
- ✓ Reduced tyre squeal
- ✓ Waterproof assistance
- ✓ Hardens surface
- ✓ Reduces dusts
- ✓ Clear invisible finish
- ✓ Environmentally friendly
- ✓ Low odour - 0.0g/L VOC
- ✓ Long lasting
- ✓ Reduces staining.
- ✓ Retards efflorescence
- ✓ Highly resistant to alkali attack
- ✓ Improves Fungus / Mildew Resistance
- ✓ Resists Freeze - Thaw Damage
- ✓ Enhances Traction Quality
- ✓ Easy and safe to apply
- ✓ UV Resistant
- ✓ User Friendly
- ✓ Non-Flammable
- ✓ Will not darken or yellow
- ✓ Low cost



Protection for a new mechanics workshop, complete protection

